

# PHYSICAL DESCRIPTION

**2 VERBS**

**BE**

= ESSERE



John **is** tall

**HAVE GOT**

= AVERE

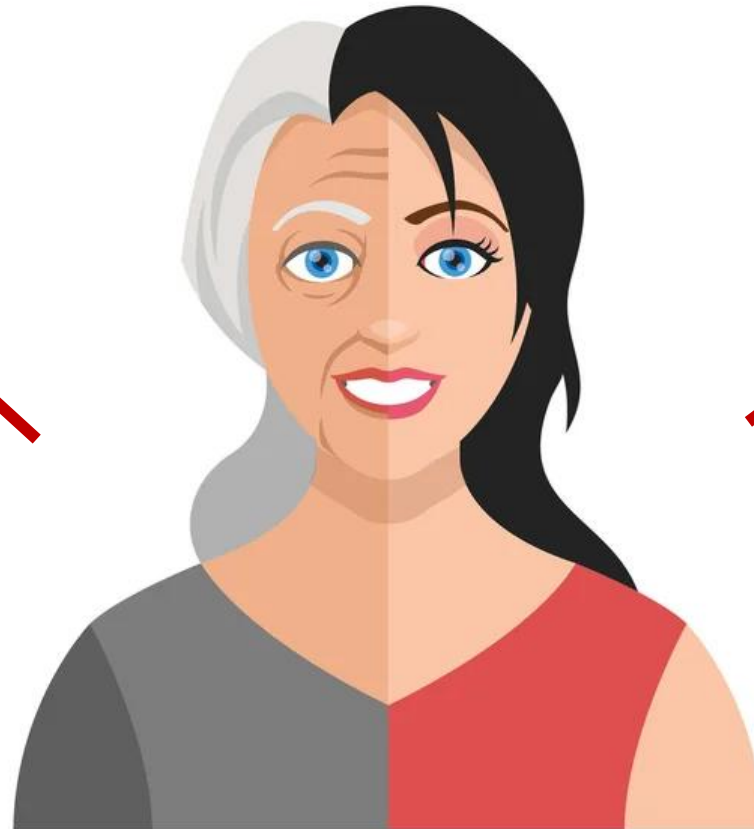
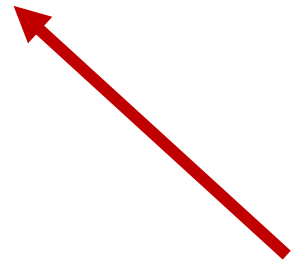


John **has got** blue eyes

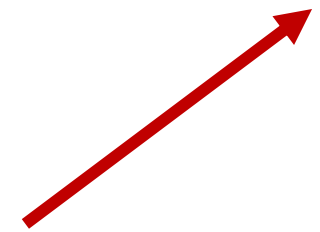
# 1) AGE

A person **IS**

**OLD**



**YOUNG**



## 2) HEIGHT

A person **IS**

**TALL**

**MEDIUM  
HEIGHT**



**SHORT**

### 3) BUILD

A person **IS**



**THIN/SLIM**



**PLUMP**



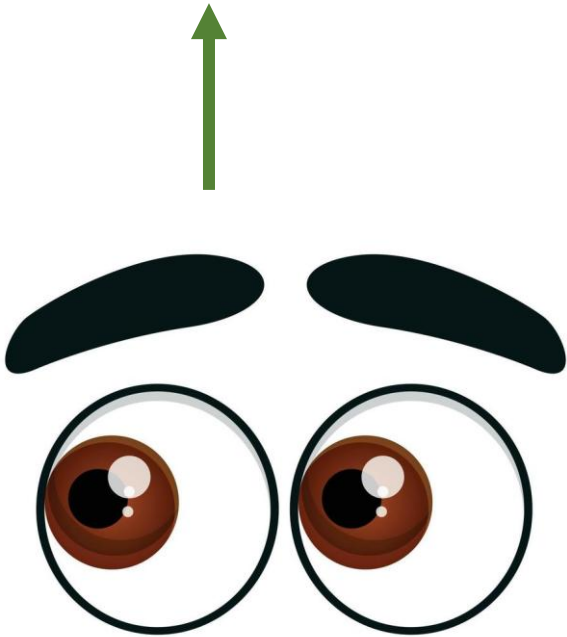
**MEDIUM BUILD**



# 1) OCCHI = EYES

A person **HAS GOT**

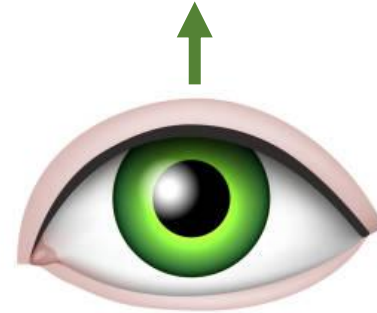
**BIG EYES**



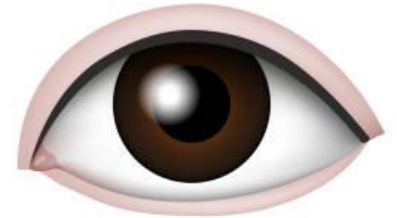
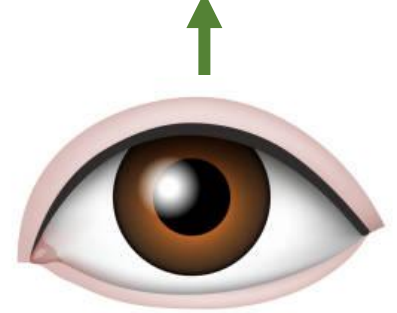
**SMALL EYES**



**GREEN EYES**



**BROWN EYES**



**BLUE EYES**

**DARK EYES**

# 1) CAPELLI = HAIR

A person **HAS GOT**

**LONG HAIR**



**SHORT HAIR**



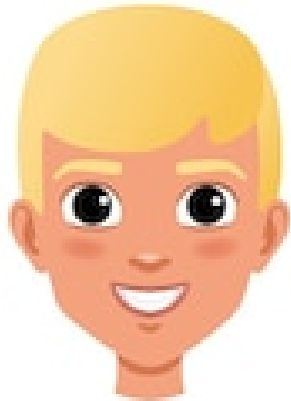
**STRAIGHT HAIR**



**CURLY HAIR**

# 1) CAPELLI = HAIR

A person **HAS GOT**



**BLOND HAIR**



A person  
is blond



**BROWN HAIR**



**BLACK HAIR**



**DARK HAIR**



**RED HAIR**



**GREY/WHITE HAIR**



# ORDER OF ADJECTIVES FOR HAIR

1 lunghezza, 2 stile, 3 colore



She has got **long, straight, blond hair** and big green eyes.



She has got **short, curly, brown hair** and big brown eyes

# PERSONALITY

A person **IS**



↓  
HAPPY

≠



↓  
SAD



≠



↓  
**WORRIED**  
**NERVOUS**  
**ANXIOUS**

↓  
**CALM**

**SHY**



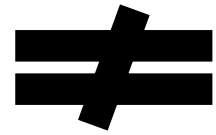
**CONFIDENT**

≠





**VAIN**



**MODEST**



**KIND**



**FRIENDLY**

**≠**

**UNFRIENDLY**  
**UNKIND**  
**RUDE**

